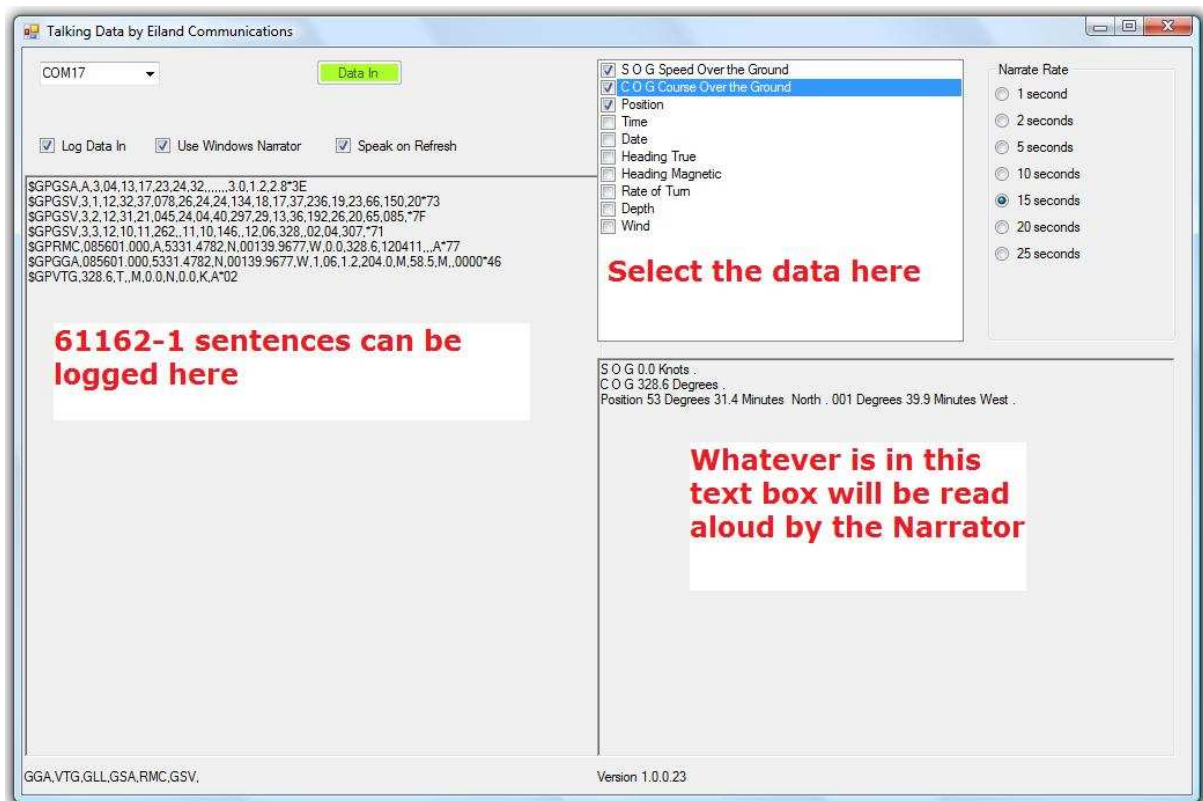


Eiland Communications Limited

TALKING DATA Application

Interprets 61162-1 Data as Speech.

THE TALKING DATA APPLICATION IS DEVELOPED TO ENHANCE THE SAILING EXPERIENCE FOR THE BLIND OR VISUALLY IMPAIRED SAILOR. EILAND COMMUNICATIONS LIMITED DOES NOT RECOMMEND THAT THE APPLICATION IS USED FOR NAVIGATION AND ACCEPTS NO LIABILITY WHATSOEVER FOR THE CONSEQUENCES OF THE USER RELYING ON THE INFORMATION RELAYED BY 'TALKING DATA'.



Installation

Extract the files from the compressed data file and double click on the setup Icon. To run the application your computer might need to download the .NET Framework 4 from Microsoft which it will do automatically. Your PC will only have to do this once.

Installation will create a program folder called Eiland Communications Limited containing the application 'Talking Data'.

Set Up

Make sure that a serial port is available. Before connecting the GPS or other data source open the TALKING DATA program and select the serial port from the drop-down menu. Once this has been done the data source can

be connected. Data is expected at 4800 baud, no parity with 1 stop bit. The left hand window will show the data being received with a constantly updated list of the headers at the foot of the screen. Note that data will only be displayed just before the narration. This is avoid wasting the processing power of the computer.

Using the checkboxes the data you want to hear can be selected. Other checkboxes allow automated narration by Windows Narrator (if included in your O/S) or there is an option to use a third party narrator or screen reader. Position the mouse pointer or cursor anywhere in the output text box and TALKING DATA will automatically speak as soon as the data has been refreshed at a selectable rate of between 1 and 25 seconds.

By using a Bluetooth headset and the narrator it is possible to have hands free operation.

The settings for the serial port, desired output data and narration status are saved when the TALKING DATA program is closed. They will be reloaded when TALKING DATA program is restarted.

This program was created by an enquiry asking if we could specifically do this task. We are highly flexible so if you need a variation on this application please ask.

Issue 6 August 15th, 2011